



Matech LTD.

Introduction

With sales revenue of ten billions HUF, KÉSZ Group is a key player in Hungary's construction industry. Our principle is to provide quality services to developers and clients over a broad spectrum of industry. Drawing on our own resources, including a professional staff, we are able to implement a diverse array of projects in both building construction and civil engineering.

Within the portfolio of services we can offer, we laid down a solid foundation for building electricity business back in mid-1990s. It was in spring of 2000 that we started the production of electricity distribution equipment and switchboxes in our plant set up at KÉSZ Industrial Park in Kecskemét, Hungary. In response to market demand, we launched a team of electrical and mechanical service and maintenance professionals in autumn of 2002. Early in 2004, KÉSZ pooled building engineering and building electricity resources in a single organizational unit, Installations Directorate, for increased efficiency and productivity.

We are sure to be on the right track with our reorganization process started in 2007, about to be brought to a completion in our days as it is evident from the successful implementation of Budapest Airport and Mercedes Kecskemét projects, as well as with our profile and portfolio cleaning efforts. Our strategic firms, KÉSZ Építő Zrt. and KÉSZ Ipari Gyártó Kft. both floated in 2008, have become key players in the Hungarian building and construction market in their own right.

By virtue of the decision by KÉSZ Group Board, the third strategic firm of KÉSZ Group's construction division, Matech Magyar Technológiai Kft. was founded on 4 January 2011. Matech's activity scope covers the installation of steel structures, technological installation works, building services and electrical installation, production and installation of switchboxes and architectural products as well as renewable energy technologies.

KÉSZ Group's goal is to help Matech Magyar Technológiai Kft. gain, shoulder-to-shoulder with market leaders KÉSZ Építő Zrt. and KÉSZ Ipari Gyártó Kft., a worthy position through organic development and with advanced profit-making capabilities.

It is our goal to keep on building the future and creating spatial values, together with our partners as we have done so far. For this to happen, KÉSZ Group invariably offers a broad range of quality services from idea to implementation.



Complex Services

Complex Services

Building electricity

Building electrical design

Building electrical installation

Building electrical services

Production of electrical switchboxes

Maintenance

Building engineering

Building mechanical design

Building mechanical installation

Maintenance

Steel structure manufacturing

Technological erection

Technical operation utilizing
renewable energy sources

Building Electricity and Mechanical Design

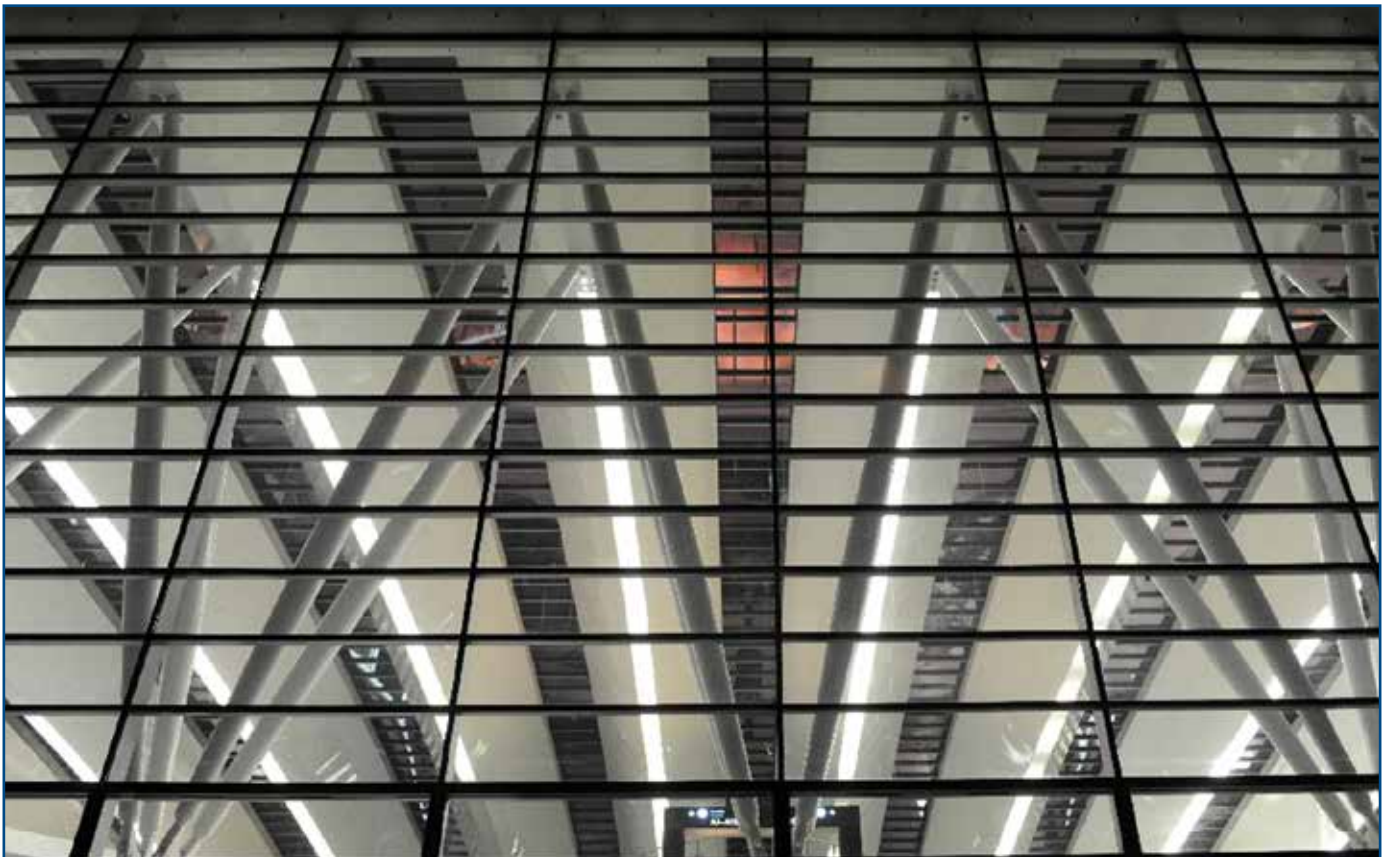
Our design office was formed to perform complex design jobs, and is capable of managing any architectural project. Our staff of building electricity and building services designers is fit for enhancing excellence in organizational crafts business.

It is not rare to implement purely custom-tailored electrical or mechanical design projects for our clients, but most often design assignments also include construction work. Besides general office software, our staff uses target-oriented drawing and dimensioning software products. As part of our design work, we keep our staff continuously informed of anything new in products and best technical solutions. Our professional contacts with major Hungarian and foreign manufacturers allow us to offer our partners best-in-class systems as regards quality, efficiency and energy utilization.

Speed

Quality

Cost minimization



Building Electrical Installation

Directed by the chief production engineer, our installation unit implements project jobs through the quality work of master builders and installation teams organized and directed by a staff with higher qualifications. Our installation work covers a full range of transportation, mounting, commissioning, measurement, and documentation activities that may be required for building electrical installation. In addition to general 0.4 kV electrical installation works, our diverse activity compass includes a broad range of IT system uses, unique solutions, controls, signalling applications and other special jobs. We install medium voltage electricity supply systems (mainly for supplying project facilities) and any other industrial and technological project-related systems custom engineered to meet special demands. In recent years we have done installation works for shopping centres, industrial plants, public and residential buildings, sports complexes as well as military establishments and heavy industry project facilities. For installation, we have the following certificates in

ISO 9001 quality assurance

ISO 14001 environmental management

Qualified NATO supplier.



Building Mechanical Installation

Our building services staff takes an active share in the fulfilment of KÉSZ Group's general construction jobs, and also implement independent installation projects. Our project supervisors work to perform and implement projects won by the Business Office. Members of the management apply an area and task-specific approach to projects won by KÉSZ Group and so-called "external work". Besides our in-house workforce, we also use an established network of subcontractors in project implementation. Our management staff has the powers of a responsible technical manager. An operation-oriented internal training programme and a system designed to provide up-to-date tracking of the economic and technical status of project implementation provide clients with guarantee for precise and high-quality construction and installation work and prompt handling of guarantee cases.



Public institutions, stadiums, office buildings, spas, industrial plant halls, public kitchens and shopping centres are on the list of our key references.



Erection of Steel Structures

The steel structure construction division is set up for organizing the work of our steel structure installation teams. Our company undertakes the construction and installation of heavy, medium weight and light steel structures and frames for establishments in mechanical industries, food processing, agriculture, building materials industry, energy management, environmental protection and sports facilities, as well as the construction of bridges and conveyor lines.



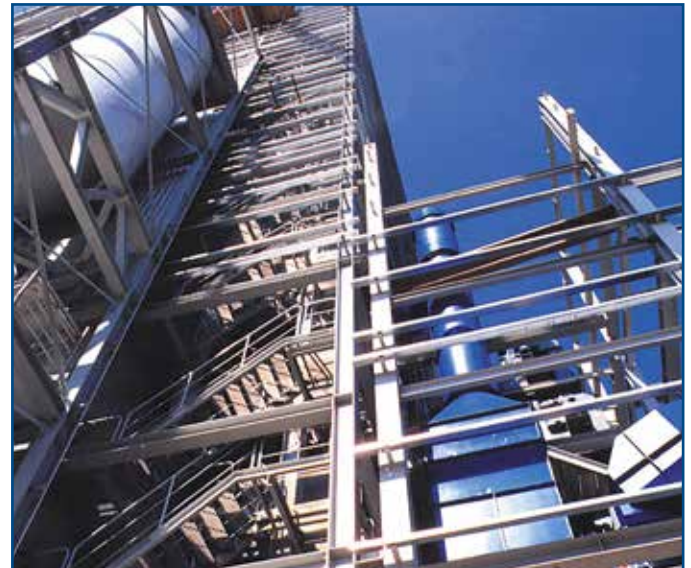
Our production centre in Kecskemét supplies steel structures required for project implementation. The quality of our steel structure installation work and qualifications of our professional staff are appreciated by professional awards won in both Hungary and foreign countries.



Technological Erection Equipment Installation

Our company is a market leader in domestic technological installations. We have a broad range of references in the installation of industrial steel structures and implementation of complete technologies. Our fitters have a rich experience in the installation and commissioning of mechanical and electrical units, instruments and automatic applications, as well as in conducting operational tests. We undertake the technological installation of building & construction, energy management, oil industry, chemical industry, mechanical industry, agricultural and environmental establishments and facilities both in Hungary and abroad, providing the highest possible quality level always in view of locally effective safety regulations. Our company is almost the only one in the Hungarian technological market to have a power station certificate that allows us to perform a full range of installation and mounting work in internal power station space.

We have opened our newest profile in year 2013 with our own production factory for welding stainless steel pipes and flanges in one of the most important technological equipment area in Hungary namely the Chemistry Industrial Plant in Tiszaújváros (TVK) with an own fabrication hall of 600 m² to expand our profile in the direction to be able to produce pipes and other equipment parts. For this factory we successfully awarded the standard EN ISO 3834_2 also.



Electrical Switchbox Manufacturing

In spring of 2000, our Electrical Production Centre at KÉSZ Industrial Park in Kecskemét launched the production of 0.4 kV electrical switchboxes. This new line of business was based on buyer-oriented activities, production of high-quality equipment and precise deliveries to clients on schedule, and supported by a reliable professional background. In 2002, increasing market demand impelled us to organize a service and maintenance team, as well.

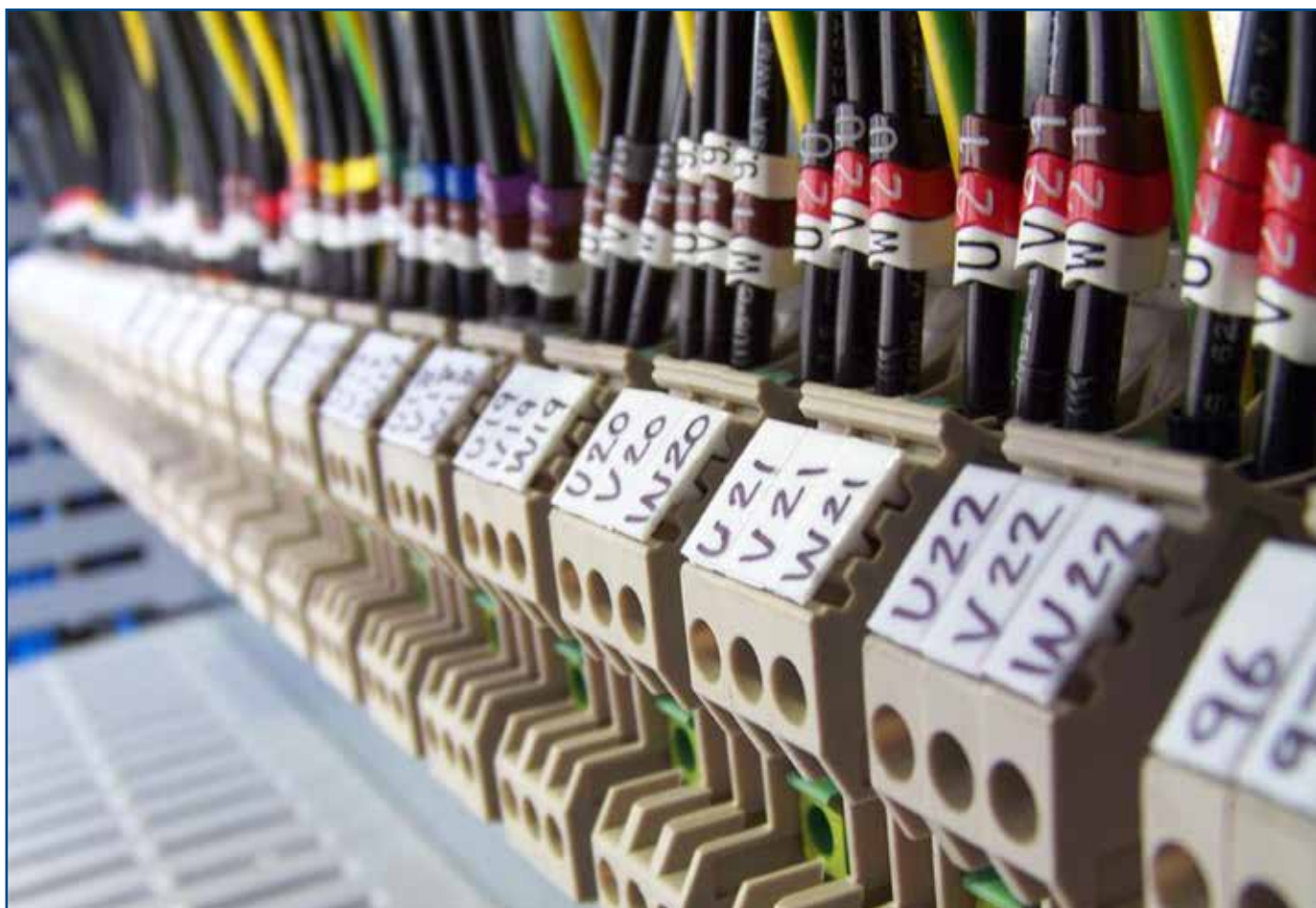


A diverse range of distribution system is assembled at our plant, using products from major component manufacturers. Our plant is an official Siemens, Schneider Electric, and Moeller Electric certified partner company. At the beginning, this plant produced electrical switchboxes for development projects implemented by KÉSZ Group, but by now it has achieved an adequate staffing level and has sufficient resources to provide full services customized for external users' changing needs for electrical distribution equipment on a continuous basis. Our Production Centre has had a portfolio of orders increasing over years, so now we have a strong list of major electrical references covering educational institutions, hospitals, recreational complexes and spas. Also, we have managed to enter the market segment of industrial developers (in heavy, energy and chemical industries). For example, Paksi Atomerőmű Rt. (Paks Power Plant Co.) placed an order with our Centre for the production of auxiliary distribution cabinets. Our electrical distributors have been installed as part of a major reconstruction of Magyar Telekom Rt's telecom centre in Szeged and Budapest. We have produced heavy current and control distributors for the technological installations of Hankook tires factory in Dunaújváros and supplied building management system (BMS) switch equipment for a Bridgestone rubber company. Thanks to our former orders, we have got a renewed Siemens, Moeller Electric and Schneider Electric licence, which also means that our plant has become a manufacturer of Siemens Sivacon electrical switchboards up to 7000 A, even in plug-in design. Centre staff members are also well-experienced in the production and installation of Schrack, General Electric and Legrand equipment.



We produce the following product lines:

- Main distributors
- Sub-distributors,
- Distributors for building installation,
- BMS distributors,
- Phase correction devices,
- distributors for building site applications, and
- Industrial automation equipment.



Scope of products and main technical parameters:

Rated voltage: 400 to 690 V ; Rated current: 1 to 7000 A

Architectural Product Manufacturing

Építészeti Termékgyártó Központ (Architectural Products Centre), present on the Hungarian building & construction market nearly 20 years, manufactures, sells, and installs architectural panels, metal coverings and fixed and power shields as a KÉSZ Group member. Outdoor and indoor Luxalon® covering metal strips, suspended ceiling and shielding alu panels are from the Centre's production lines. Also, our Centre is a distributor of Mitsubishi Alpolic/fr large metal composite panels used in various colours as façade coverings with aluminium or other metal alloy armature. In compliance with today's building energy management requirements, our Centre distributes adjustable laminar shields and shutters for outdoor application as well as winter garden canopies and, among others, awning blinds. With the CNC machining centre set up in our plant, we can machine plates and boards irrespective of their material even in extremely large dimensions to be able to serve interior design and ad industry needs, as well. We also produce trapezoidal sheets, rolled plates and other products with bent edges to offer our buyers a complete product range as well as complete systems and solutions.

Architectural Products Centre is in charge of the production, assembly, distribution and installation of architectural products.



AUTOMOTIVE INDUSTRY REFERENCES

Daimler production hall, Kecskemét

Year of project: 2010–2011

Building electricity installation

Employers: Daimler, Siemens AG, Dürr

- Heavy current electrical devices of the painting and assembly halls
- Electrical installation works of DÜRR technology
- Placement and assembly of middle voltage devices
- Lightning protection system for all buildings
- Building grounding and lightning protection systems for the painting hall, entrance and central buildings
- Manufacture and installation of lighting distributors of the painting hall

Building engineering construction

Employer: COFELY Gebäudetechnik GmbH.

Implementation of rain water drainage and sprinkler system.

Steel structure installation

Employer: Daimler, DÜRR, Rofa

Installation of suspended technological steel structure for the body-conveyor track within the Mercedes project in Kecskemét. Construction of the building structure and facade covering of building 020 (Oberfläche), installation of Dürr technological steel structure and painting technological podiums.

Installation of suspended technological steel structure for the Rofa body-conveyor and the installation of steel structure of the Siemens podium within the construction of building 040 (assembly hall).



AUTOMOTIVE INDUSTRY REFERENCES

Daimler production hall, Kecskemét

Year of project: 2010–2011

Building electricity installation

Employers: Daimler, Siemens AG, Dürr

- Heavy current electrical devices of the painting and assembly halls
- Electrical installation works of DÜRR technology
- Placement and assembly of middle voltage devices
- Lightning protection system for all buildings
- Building grounding and lightning protection systems for the painting hall, entrance and central buildings
- Manufacture and installation of lighting distributors of the painting hall

Building engineering construction

Employer: COFELY Gebäudetechnik GmbH.

Implementation of rain water drainage and sprinkler system.

Steel structure installation

Employer: Daimler, DÜRR, Rofa

Installation of suspended technological steel structure for the body-conveyor track within the Mercedes project in Kecskemét. Construction of the building structure and facade covering of building 020 (Oberfläche), installation of Dürr technological steel structure and painting technological podiums.

Installation of suspended technological steel structure for the Rofa body-conveyor and the installation of steel structure of the Siemens podium within the construction of building 040 (assembly hall).



Automotive Industry References

Magna production hall, Helvécia

Year of project: 2011

Building electricity installation

Employer: Magna Automotive Hungary Kft.

- Heavy current installation
- Manufacture of distribution racks for heavy current and building management
- Middle voltage installation
- Low current installation

Building engineering construction

Employer: Magna Automotive Hungary Kft.

Construction of the complete building engineering and fire protection system.



Modine production hall, Mezőkövesd

Year of project: 2011

Building electricity installation

Employer: Modine Hungária Kft.

- Heavy current installation
- Manufacture of heavy current distribution racks
- Middle voltage installation
- Low current installation
- Power supply of technological production lines

Building engineering construction

Employer: Modine Hungária Kft.

Construction of the complete building engineering and fire protection systems.



Automotive Industry References

SMR production hall, Mosonmagyaróvár

Year of project: 2010–2011

Building electricity installation

Employer: SMR Automotive Mirror Technology Hungary Bt.

- Heavy current installation
- Manufacture of distribution racks for heavy current and building management
- Middle voltage installation
- Low current installation

Building engineering construction

Installation of the complete building engineering and fire protection systems, and the construction of the industrial cooling system of the hall.



AUTOMOTIVE INDUSTRY REFERENCES

Allison production hall, Szentgotthárd

Year of project: 2010–2011

Building electricity installation

Employer: Allison Transmission Inc.

- Heavy current installation
- Manufacture of heavy current distribution racks
- Middle voltage installation
- Low current installation

Steel structure installation

Employer: Allison Transmission Inc.

Technological steel structure installation, installation of the steel structure of the building, facade covering, roofing.

Building engineering construction

Employer: Allison Transmission Inc.

Construction of the complete building engineering system and installation of the fire protection systems.



INDUSTRIAL AND POWER STATION FACILITIES

DWA Dunaferr, Dunaújváros

Year of project: 2008–2009

Building electrical construction

Employer: Danieli, Dunaferr

The complete electrical installation works of the hot-rolling mill furnace technology.



Borsodchem



INDUSTRIAL AND POWER STATION FACILITIES

Glencore, Foktő



Syngenta, Mezőtúr



INDUSTRIAL AND POWER STATION FACILITIES

Pepperl & Fuchs



INDUSTRIAL AND POWER STATION FACILITIES

MVM Paksi Atomerőmű

Year of project: 2011

Production of distribution systems

Employer: Paksi Atomerőmű Zrt.

- construction of rack-mounted auxiliary high-current distribution systems (ABOS4T nuclear qualification)

Steel structure installation

Temporary storage of the burnt assemblies.

Steel structure installation, facade and roof covering.



INDUSTRIAL AND POWER STATION FACILITIES

Pannonia Ethanol, Dunaföldvár

Year of project: 2011–2012

Steel structure installation

Employer: Fagen Europe Llc.

Steel structure installation at the ethanol-production facility, installation of technological steel structure, facade and roof covering, and building electrical installation.



STRATEGIC PROJECT 2010–2012

Budapest Airport, Execution works of SkyCourt, general refurbishment of T2A and T2B

Year of project: 2010–2012

Building electricity installation

Employer: Budapest Airport Zrt.

- Heavy current installation
- Manufacture of distribution racks for heavy current and building management
- Middle voltage installation
- Low current installation

Building engineering construction

Employer: Budapest Airport Zrt.

Installation of the complete building engineering and fire protection systems.

Steel structure installation

Employer: Budapest Airport Zrt.

The installation works of the SkyCourt roof structure.



OFFICE BUILDINGS

Capital Square Office Building, Budapest

Year of project: 2010

Building engineering construction

Employer: Hochtief Development Hungary Kft.

Construction of the complete building engineering system and installation of the fire protection systems of the office building.



REsidence Office Building, Budapest

Year of project: 2010

Building engineering construction

Employer: RE Project Development Kft.

Construction of the complete building engineering system and installation of the fire protection systems of the office buildings.



OFFICE BUILDINGS

Kinnarps Office Building, Budapest

Year of project: 2010

Building engineering construction

Employer: Kinnarps House Ingatlanfejlesztő és Ingatlanhasználó Kft.

Construction of the complete building engineering system and installation of the fire protection systems of the office building.



OFFICE BUILDINGS

Ü48 Office Building, Budapest

Year of project: 2010

Building engineering construction

Employer: Budapest Ingatlanfejlesztő Nyrt.

Construction of the complete building engineering system and installation of the fire protection systems of the office building.



Hotel

Hotel Intercontinental

Year of project: 2010–2011

Building engineering construction

Employer: Kairos Szálloda Kft.

Refurbishment of the complete building engineering system and installation of the fire protection systems of the hotel.



Hotel

Four Points by Sheraton Year of project: 2012–2013

Alpolic, luxalon cladding elements, thin bended elements as own product



Qualifications, certificates

MSZ EN ISO 9001:2009,

MSZ EN ISO 14001:2005

MSZ EN ISO 28001:2008

MSZ EN ISO 3834_2

OHSAS 18001:2007

SCCp – internationally accepted
HSE certificate pharma industry

Nuclear Power Plant projects (ABOS 3)







Matech Magyar Technológiai Kft.
H-6722 Szeged, Gutenberg utca 25-27.
Tel: +36 62 566 600
Fax: +36 62 566 699

Central Office
H-1095 Budapest, Mester utca 87.
Tel: +36 1 4766 500
Fax: +36 76 801 515

Email: matec@matec.hu

www.matechnologia.hu